

PRODUCT DATA SHEET

LED LIGHTPACK

www.fitzlight.co.uk
01208 79524

Fitzgerald 

LED LIGHTPACK

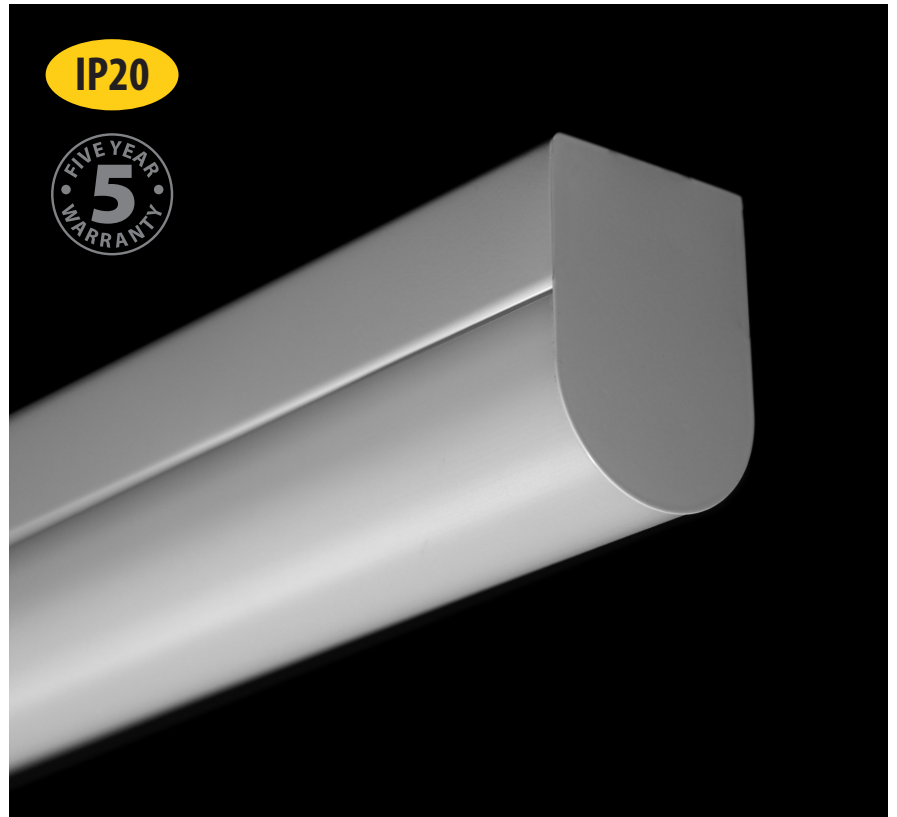
Our new LED Lightpack is an energy saving lighting concept which can be fitted with a variety of sensors for further saving.

A slim luminaire with clean lines that gives a pure white light for your industrial or commercial applications.



Applications:

- Schools
- Offices
- Kitchens
- Workshops
- Factories
- Corridors

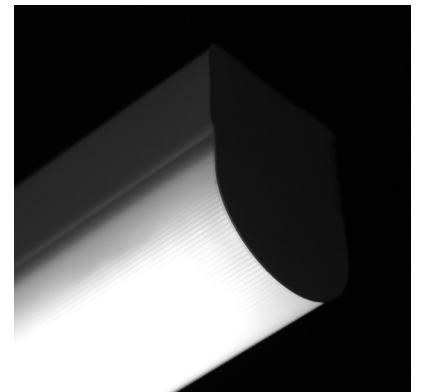


Product Specifications:

- Manufactured from mild steel with white paint finish with a specially designed PMMA diffuser
- Constant output driver with colour 840 as standard

Optional Features:

/BK: Black paint finish



High quality LED chips mounted in a robust steel box frame

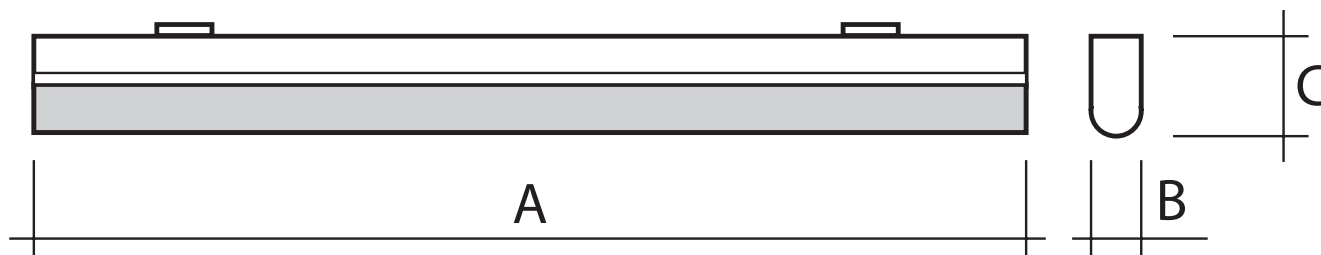


Cool white 4000 kelvin LED gives an outstanding performance



Designed and manufactured in the United Kingdom

LED LIGHTPACK



ORDER CODES

LED Lightpack - Single	Board Lumens	Watts	A	B	C
LPL/2/CO/840	1200	8	526	59	83
LPL/3/CO/840	2400	16	862	59	83
LPL/4/CO/840	3000	20	1142	59	83
LPL/5/CO/840	4002	29	1422	59	83
LPL/6/CO/840	5520	40	1702	59	83
LED Lightpack - Twin	Board Lumens	Watts	A	B	C
LPL/2T/CO/840	2400	16	526	59	83
LPL/3T/CO/840	4140	30	862	59	83
LPL/4T/CO/840	6000	40	1142	59	83
LPL/5T/CO/840	8004	58	1422	59	83
LPL/6T/CO/840	9108	66	1702	59	83

LED Lightpack part code formula example:

Product Family	Body Style	Output Driver	Colour Temp	Emergency Option
LPL	5T	CO	840	M3

Emergency Options: /M3: 3hr maintained emergency option available on both bodies.